



WEBINAR SERIES

Considerations when Implementing Third-Party Technology Event Solutions with iMIS

Presented by:
Association Technology Solutions



- Serving iMIS community since 1995
- Full-service Authorized iMIS Solutions Provider (AiSP)
- Application development to extend the functionality of iMIS
- iMIS Bridge powered by ATS with over 140 integrations
- Over 100 RiSE website implementations
- iMIS EMS upgrade specialists supporting dozens of iMIS EMS clients



Presented by



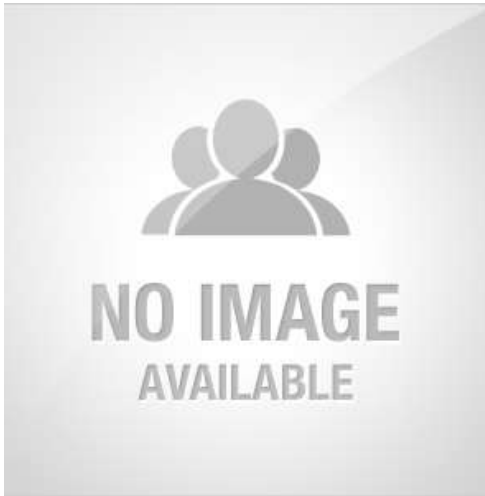
Presenter:

Randy Richter

Director of Technology Solutions,
Partner

Association Technology Solutions, LLC

Email: rrichter@atsol.org



Moderator:

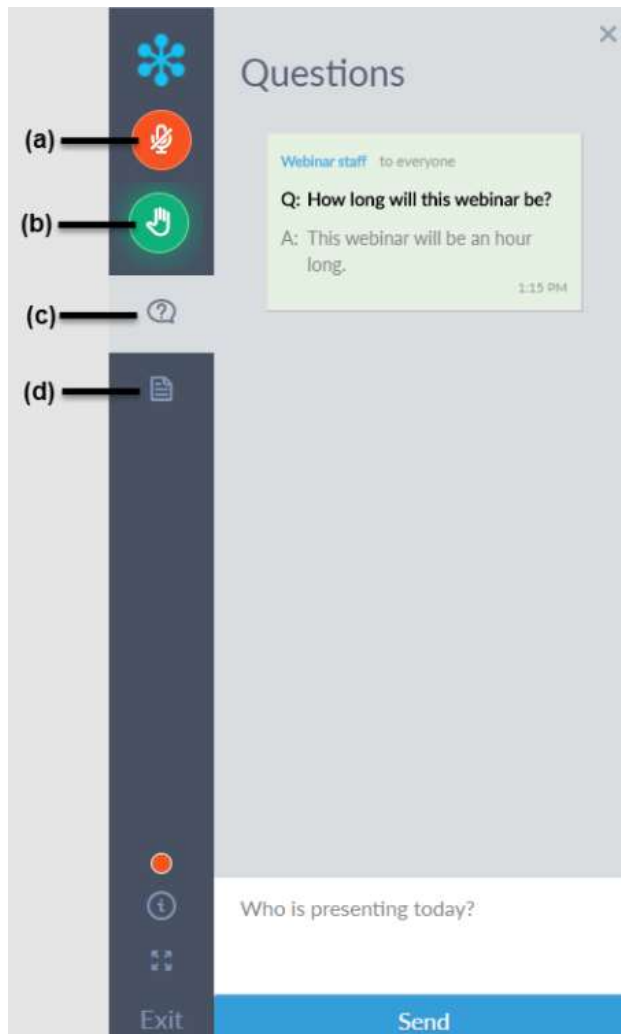
Richard Banks

Sales Manager

Association Technology Solutions, LLC

Email: rbanks@atsol.org



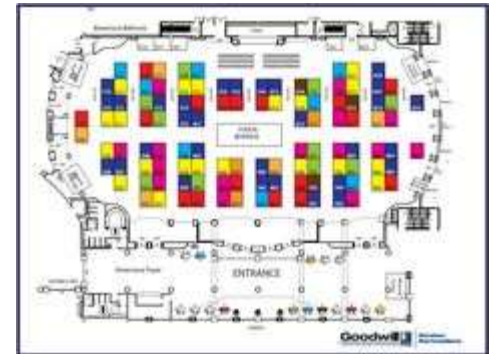


- a) Attendees are muted to reduce background noise
- b) Raise your hand to get the attention of the presenter/moderator
- c) Download handouts
(not typically provided for ATS webinars)
- d) Ask questions to be answered during Q&A after presentation is complete



Event Technology

- Website/Show site
- Call for Proposals
- Registration
- Booth Sales
- Mobile Apps
- Live Streaming
- Post conference replay
- Online/Virtual events





Overall Principals to Assess

- Can you achieve your goal with iMIS?
- Is there a component to add on to iMIS?
- Where is the source of truth?
- Follow the Money





Website/Show site



[Join IA](#) | [Create Account](#) | [Find A Member](#) | [Find A Certified Professional](#) | [DONATE TODAY](#)

[SIGN IN](#) | [CONTACT US](#) | [EVENTS CALENDAR](#) | [STORE](#)

[ABOUT](#) | [MEMBERSHIP](#) | [EDUCATION](#) | [CERTIFICATION](#) | [WORKFORCE DEVELOPMENT](#) | [ADVOCACY](#) | [CONFERENCES](#) | [NEWS](#) | [RESOURCES](#)

#4

Leading the Way
Irrigation Show Countdown
#4 – Certification

[View the Full List](#)



- Who wants to speak?
- What do they want to speak on?
- How do you select who will speak?
- How do you manage speaker pictures and bios?
- Depending on the complexity of your systems, iMIS can perform many of these features.
- There are good add-ons
 - Open Water
 - Cadmium
 - Typically provide SSO and write back of data to iMIS.
- Once the data is in iMIS, it can be used in your program.

Event Program Toolbox

Image



What	Technology Expo
When	Mar 01, 2011 - Mar 04, 2011
Where	Austin Convention Center 1215 West 4th Street Austin, TX 78756

- Either use the iMIS Event module or the third party
 - You need to determine the source of truth
 - Order numbers are created in iMIS when using the iMIS event module
 - Order numbers are created in third-party when using a third-party event module.



If Registration is done in iMIS

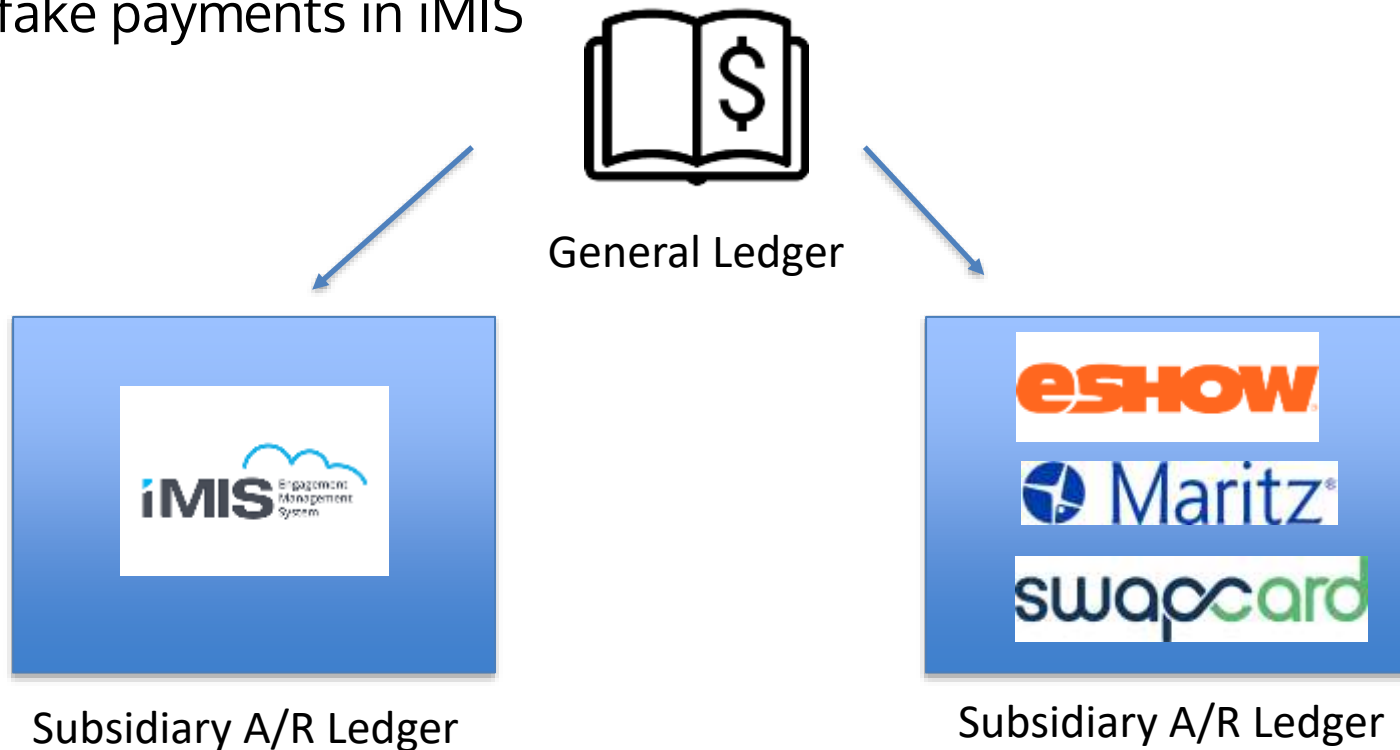
- iMIS is source of truth on the registration
- Registration is done in RiSE
- Money is processed in iMIS
- Third party may pull lists of registrants, for printing badges, tickets, ribbons
- Attendance/participation can be written back to iMIS
- After meeting is closed you will see an activity record

If Registration is done in third-party

- Third-party is source of truth
- Registration is done in third-party
- Money is processed at third party
- SSO can pull people to third-party for pricing (e.g., member pricing)
- Attendance/participation can be written back to iMIS
- After the meeting is over you will see an activity record

Follow the Money

- When processing the money through a third-party system, they become an additional subsidiary accounts receivable ledger
- No batches in iMIS in this model
- No fake payments in iMIS





Reconciliation



General Ledger
\$10,000 for the day



Subsidiary A/R Ledger
\$6500 for the day



Subsidiary A/R Ledger
\$3500 for the day



- Rental can occur in iMIS or at Third Party
- May include an SSO
- Exhibitors could be entered in iMIS or at third-party
- Can update floor plan at third-party
- Same rules apply about the money





Mobile Apps

- Typically, IQA driven from data in iMIS
- Can show
 - Event Agenda
 - Event Information
 - Tracks
 - Sessions
 - Attendees
 - Attendee sessions (what they signed up for in iMIS)
 - Speakers
 - Exhibitors
 - Sponsors
- May include SSO



- Generally, include an SSO
- Generally, include sending registrations information from iMIS to third party
- Ticketed events are driven from iMIS
- May include writeback of minutes attended or credit hours received



- BeaconLive
- Blackboard
- BlueSky eLearn
- Bridge2Think
- Canvas
- CECity
- CommPartners
- CPA Crossings
- Curatr LXP
- Crowd Wisdom
- Digitell
- EDlumina
- Freestone (formerly Peach New Media)
- GoToTraining
- GoToWebinar
- iCohere
- Knowledge Direct
- KnowledgeOwl
- LearnSomething
- Moodle
- Mykademy
- NextThought
- omNovia
- ON24
- Onstream Media
- Pathable
- ProLearn
- ReadyTalk
- SABA
- Thought Industries
- Web Courseworks
- World Continuing Education Alliance
- Zoom
- a2z
- American Tradeshow Services
- Attendee Interactive
- Bravura
- Cadmium CD
- Convention Data Services
- Convention Technology Enhancements (CTE)
- CrowdCompass
- Encaptiv
- eShow
- Eventpedia
- Event Ready
- EventRebels
- Experient
- Expo Logic
- Expocad
- Map Your Show
- MCI
- Notified Event Cloud
- Passkey
- Spargo
- Swapcard
- The Pulse Network
- Wolters Kluwer Virtual Hub
- Zerista(Eventsforce)

- Use all possible features of iMIS when possible
- Only use a third-party if there is a showstopper
- Use vendors that integrate with iMIS
 - <https://www.imismarketplace.com>
 - NiUG App & Add-on Toolbox
https://www.niug.org/NiUG/App_for_That/App_and_Add-On_Toolbox.aspx
- Define the source of truth
- Be clear about the money and how it flows
- Consider what you really need to see in the future



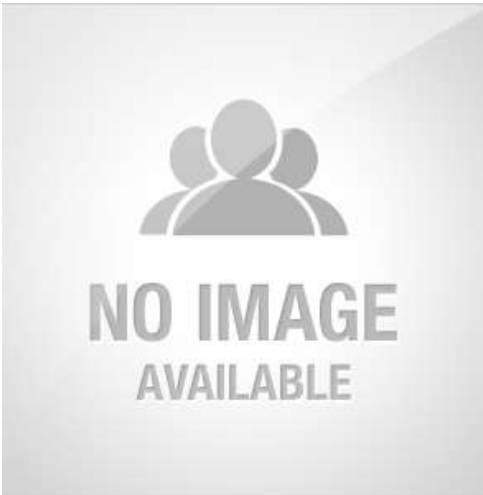
Presenter:

Randy Richter

Director of Technology Solutions,
Partner

Association Technology Solutions, LLC

Email: rrichter@atsol.org



Moderator:

Richard Banks

Sales Manager

Association Technology Solutions, LLC

Email: rbanks@atsol.org

Looking for more from the experts at ATS?

Upcoming Webinars

atsol.org/Webinars

schedule of upcoming webinars

Past Webinars

atsol.org/PastWebinars

*video recordings and
downloadable presentation slides*

ATS Learning Center

atsol.org/ATSLearningCenter

Other Questions

Email: info@atsol.org

Online: atsol.org

Phone: (720) 945-7252