

Alternative to RiSE's Website Keyword Search

Presented by:
Association Technology Solutions

- Serving iMIS community since 1995
- Full-service Authorized iMIS Solutions Provider (AiSP)
- Application development to extend the functionality of iMIS
- iMIS Bridge powered by ATS with over 120 integrations
- ASI's Client Sales Leader of the Year and Chairman Circle for 2020



Presented by



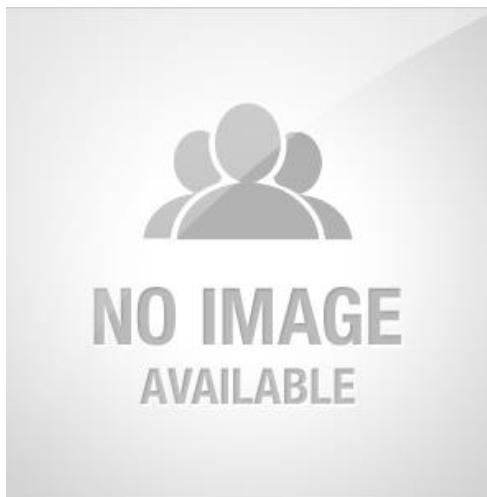
Presenter:

Tip Ramsay

Creative Director

Association Technology Solutions, LLC

Email: tramsay@atsol.org



Moderator:

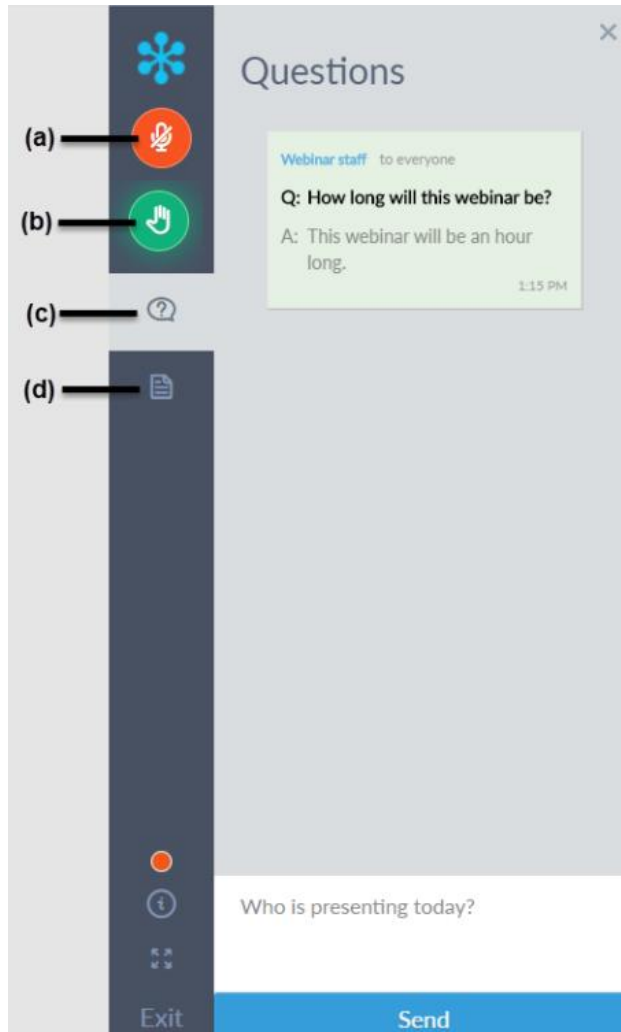
Richard Banks

Sales Manager

Association Technology Solutions, LLC

Email: rbanks@atsol.org





- a) Attendees are muted to reduce background noise
- b) Raise your hand to get the attention of the presenter/moderator
- c) Download handouts
(not typically provided for ATS webinars)
- d) Ask questions to be answered during Q&A after presentation is complete

- Review RiSE's out of the box search ipart
 - PRO's and CON's
- Review Googles Programmable Search
 - PRO's and CON's
- Live demonstration of how to add Google's Programmable Search to your site
 - Review setup options
- Q&A

RiSE Common Search iPart

- **PRO:** Search form that can be customized to find different types of content and filter search choices and behaviors to fit different application pages
- **PRO:** Easy to add to RiSE Site
- **CON:** Rigid functionality
- **CON:** Must manually enter description text for each page otherwise search result only shows title
- **CON:** Does not meet user expectations

Configure iPart - Utility Navigation

*Name

iPart CSS class

Available

 Account area Navigation links Easy edit Sign in/out Translation Navigation On behalf of

Selected

 Universal

Drag-and-drop the boxes to the dark gray area.

Universal search

Default text

CSS class

Configure iPart - Common Search

Name

Title

Do not render in design mode

iPart CSS class

Display a border around this content

Display content within a collapsible panel

Show the content as collapsed

Display on screen sizes (for responsive themes only):



General Search Settings

Search Text Logic

And Or

Display Search Box

Search Label

Allow Users to Filter by Search Area

Allow Inactive Results

Add New Item Settings

Content for Add [Not Selected]

Search Results Settings

No Results Found Message

General Error Message

Results to Display per Page

Pager Display Style

Pager Location
 Top Bottom Both

Maximum Results to Display

Maximum Results Exceeded Message

Sort Order

Selected Tags
(None selected)

[Modify](#)



Common Search iPart Options

Search results

Search

Page size: 15

Annua 2016

al exhibition is he

- ✓ All
- Communities
- Content
- Donations
- Events
- Organizations
- People
- Posts
- Products

Home Page



Dec 7, 2021 –

Base Elements



Oct 20, 2021 –

I20 Staff Site Test



Google Programmable Search

- **PRO:** Provides Google search results for your website in the context of your website
- **PRO:** Easy to implement
- **PRO:** Free to use
- **PRO:** Meets user's expectations of "keyword search"
- **PRO:** Will search PDF documents
- **PRO:** Surprisingly robust features
 - Promotions
 - Refinement
 - Autocomplete
 - Synonyms
 - Statistics and Logs
- **CON:** Includes Ads by default. But if your org qualifies, can get exemption.



Google Programmable Search

The screenshot shows the AT&T website header with the 'ats' logo and tagline 'we can solve it.' Navigation links include SOLUTIONS, WEBINARS, PRODUCTS, SERVICES, DEVELOPMENT, and OUR WORK. A search bar contains 'Keyword search'. Below the header, a Google search box shows the query 'IMIS' with approximately 666 results. The top result is an advertisement for 'Complete Nonprofit Platform - Connected Fundraising' from neonone.com, featuring links for 'Neon CRM Pricing', 'Member Management', 'Volunteer Management', and 'On-Demand Video Demo'. Below the ad, the search results include 'Association Technology Solutions: AT&T', 'Bridges and Integrations for IMIS', and 'AT&T Zoom Bridge for IMIS'.

Google Search Box

Google Ads

Google Results





Google Programmable Search

- Easy set up

New search engine

▼ Edit search engine

demo.atsol.org

Setup

- Look and feel
- Search features
- Statistics and Logs

► Help

- Visit Help Forum (Ask a question)
- Send Feedback

Basics Ads Users Advanced

Provide basic details and preferences for your search engine. [Learn more](#)

Search engine name

demo.atsol.org

Search engine description

Description of search engine.

Search engine keywords ?

Search engine keywords, e.g. climate 'global warming' 'greenhouse gases'

Edition Get code

Standard

Search engine ID Copy to clipboard

3376cd99753f71f8e

Public URL

<https://cse.google.com/cse?cx=3376cd99753f71f8e>

Image search ? OFF

SafeSearch ? OFF

Region ? All Regions

Language ?

English

Sites to search

Add Delete Filter Label 1- 1 of 1 < >

<input type="checkbox"/> Site	Label	Available in Site Restricted JSON API ?
<input type="checkbox"/> www.atsol.org		✓

[Advanced](#)





Google Programmable Search

- Customize Layout

New search engine

▾ Edit search engine

demo.atsol.org ▾

Setup

- Look and feel
- Search features
- Statistics and Logs

▸ Help

- Visit Help Forum (Ask a question)
- Send Feedback

Layout Themes Customize Thumbnails

Set the layout of your search engine. Click the save button to publish your changes. [Learn more](#)

The layout selection interface shows seven options in a grid:

- Overlay**: A grid of seven boxes with a larger central box.
- Two page**: Two side-by-side boxes with a plus sign between them. This option is highlighted with a blue border.
- Full width**: A wide header bar above a large content area.
- Two column**: A wide header bar above two columns of content.
- Compact**: A mobile-style layout with a single vertical column.
- Results only**: A large, empty content area.
- Google hosted**: A header bar above the Google logo.

Save Save & Get Code





Google Programmable Search

- Use default themes

New search engine

▼ Edit search engine
demo.atsol.org

Setup
Look and feel
Search features
Statistics and Logs

► Help
Visit Help Forum (Ask a question)
Send Feedback

Layout **Themes** Customize Thumbnails

Set the theme of your search engine. Click the save button to publish your changes. [Learn more](#)

Default Minimalist Espresso
Green sky Bubble gum Shiny

- Or customize

New search engine

▼ Edit search engine
demo.atsol.org

Setup
Look and feel
Search features
Statistics and Logs

► Help
Visit Help Forum (Ask a question)
Send Feedback

Layout Themes **Customize** Thumbnails

Customize the look and feel of your search engine. Click the save button to publish your changes. [Learn more](#)

General

Font: Arial

Border color: #FFFFFF

Background color: #FFFFFF

Logo
Search box
Search button
Refinement
Google branding
Result general



- ATS Demonstration RiSE Site
 - <https://demo.atsol.org/Sandbox/>
- Google Programmable Search
 - <https://programmablesearchengine.google.com/>
- Information for Non-profits
 - Google Programmable Search > Setup > Ads Tab
 - <https://support.google.com/programmable-search/answer/4542102?hl=en&ctx=topic>



EMS Ready?

Does your RiSE site feel stagnated or outdated?

Are you unsure how to bring your RiSE site up to date?

For a limited time, we are offering a **FREE 1hr consultation** to review your RiSE site together and assess design as well as how well your site follows best practices.

Contact us at info@atsol.org to schedule your free consultation.





Presenter:

Tip Ramsay

Creative Director

Association Technology Solutions, LLC

Email: tramsay@atsol.org



Moderator:

Richard Banks

Sales Manager

Association Technology Solutions, LLC

Email: rbanks@atsol.org



**NO IMAGE
AVAILABLE**

Looking for more from the experts at ATS?

Upcoming Webinars

atsol.org/Webinars

schedule of upcoming webinars

Past Webinars

atsol.org/PastWebinars

*video recordings and
downloadable presentation slides*

ATS Learning Center

atsol.org/ATSLearningCenter

Other Questions

Email: info@atsol.org

Online: atsol.org

Phone: (720) 945-7252